





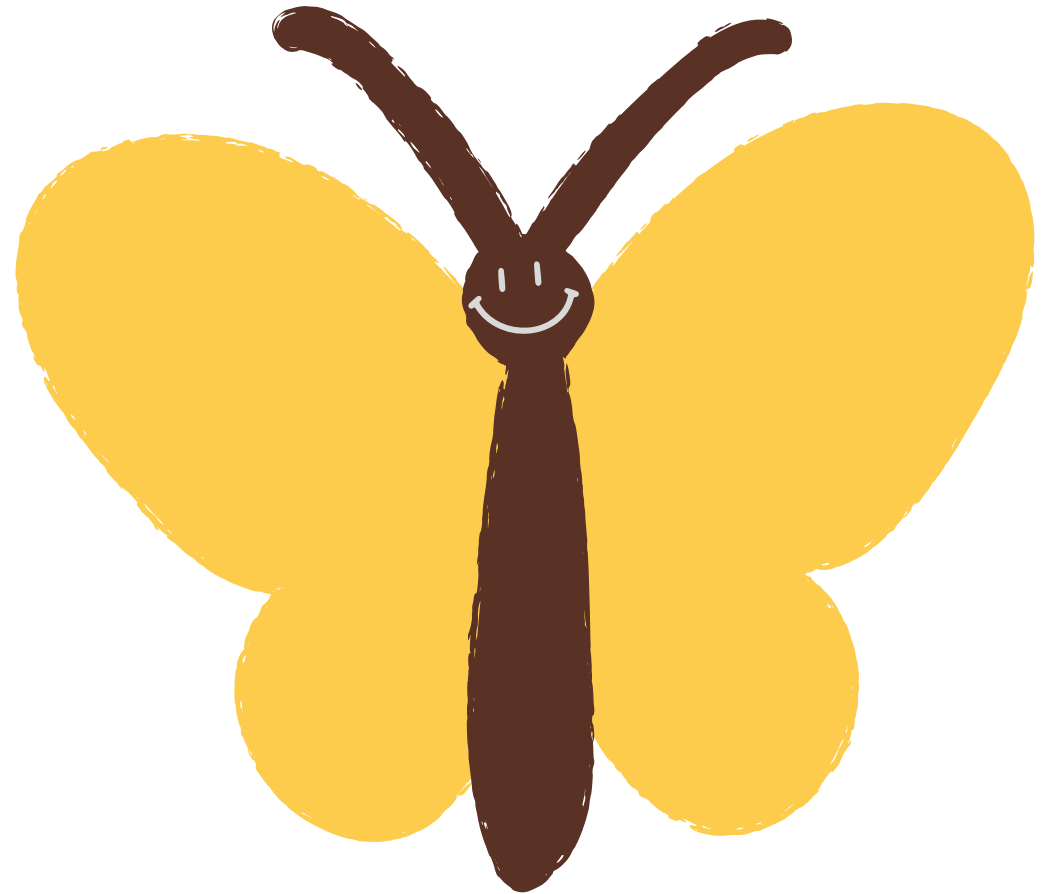


Roll a Butterfly

	Draw 1 body
	Draw 1 head
	Draw 2 antennas
	Draw 1 face
	Draw 1 wing
	Draw 1 wing



Directions:

Give each player a piece of paper and a pencil.

Roll the dice to see who goes first—the highest number starts.

The first player rolls the dice and draws the items that matches the number rolled.

Continue taking turns until some1 completes their entire picture.